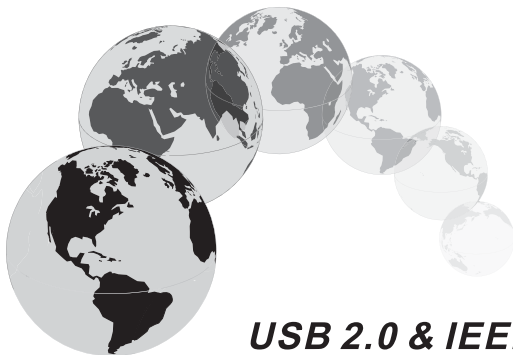


# USB 2.0 & IEEE 1394a Combo Hub User's Manual

---

---



## ***USB 2.0 & IEEE 1394a Combo Hub***

### **Packing List**

- USB 2.0 & IEEE 1394a Combo Hub
- User's Manual
- USB A to Mini B Cable 1.8M X 1
- External AC Adapter X 1

\*This package contains each of products listed above

## **Introduction:**

---

The USB 2.0 & IEEE 1394a Combo Hub provides combine two high-speed interface, USB 2.0 and 1394a into one hub, which is very convenient for users as he/she can enjoy the benefits of USB and 1394a interface in one device rather than two separate devices, i.e. USB Hub and 1394a Repeater. The Product comprises four USB ports and two 1394a ports. The USB and 1394a peripherals can be plugged into the Product and all the peripherals can be functioned simultaneously

## **Features:**

---



### **USB:**

- Compact design for easy use.
- Compliant with USB Specification Revision 2.0.
- All four A-Type USB ports support high-speed (480 Mbps), full-speed (12 Mbps) and low-speed (1.5 Mbps) data transmission.
- Supports up to 127 USB devices.
- Only support self-powered mode.



### **IEEE 1394(FireWire):**

- Support IEEE 1394-1995 standard and 1394a supplement Ver. 2.
- Support 100, 200 and 400 Mbps transmission rate.
- Two FireWire connectors.
- Fully compliant with Open HCI requirements.
- Supports up to 63 IEEE 1394 devices.
- Fully interoperable with FireWire™ and i. LINK™ implementation of IEEE Std 1394.

# **System Requirements:**

---

## **PC**

- Suggestion Intel Pentium III 533 MHz or faster processor
- 256MB RAM
- Microsoft® Windows® 98SE, 2000, ME or XP
- Available FireWire Port
- Available USB Port\*

## **MAC**

- Suggestion PowerMac Desktop G3 266MHz or faster processor
- 256MB RAM
- Mac® OS 9.21 or later\*\*
- Available FireWire Port
- Available USB Port\*

\* USB 2.0 Hub cannot operate at USB 2.0 speeds even when connected to a USB 1.1 hub or host adapter. USB 2.0 Hub connected through a USB 1.1 Host Port is limited to USB 1.1 speeds.

\*\* Mac OS 9.x is not support USB 2.0, Mac OS X 10.1 or later need the USB 2.0 host adapter.



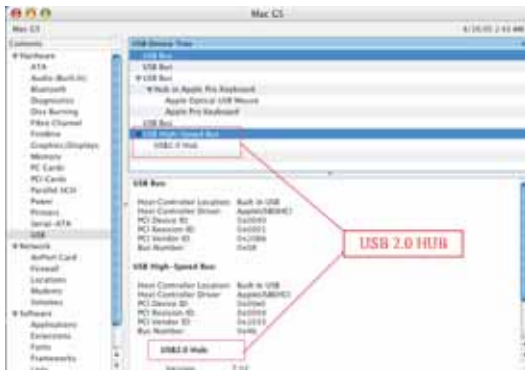
## **Note:**

1. I. LINK is a trademark of Sony Corporation.
2. FireWire is a trademark of Apple Computer, Incorporated.

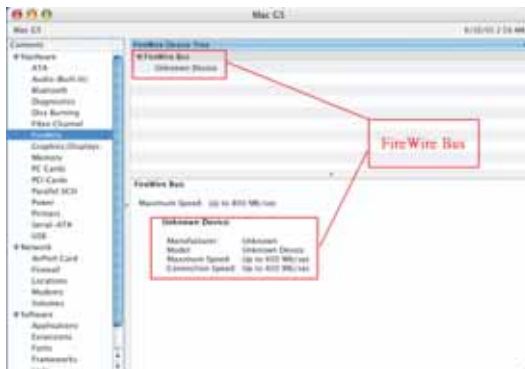
# CAUTION! :

- Please note PC will not display that 1394 portion of the Product is being installed.
- If you want use the IEEE 1394 Repeater, please use the AC Adapter.
- Firstly the computer must be USB 2.0 compatible; otherwise it will be treated as USB1.1 Hub.
- If computer is USB 2.0 compatible, then
  - Windows XP will automatically detect it and function as USB 2.0 Hub.
  - Windows 2000 it has to be connected to website, and update it, and then it can be installed automatically and treated as USB 2.0 Hub.
  - For Windows 98, 98SE and ME users, Microsoft will not update it to support USB 2.0 spec, therefore, they have to use our USB 2.0 Driver (or other third party USB 2.0 Driver for Windows 98, 98SE and ME), then the Hub can be functioned as USB 2.0 Hub.

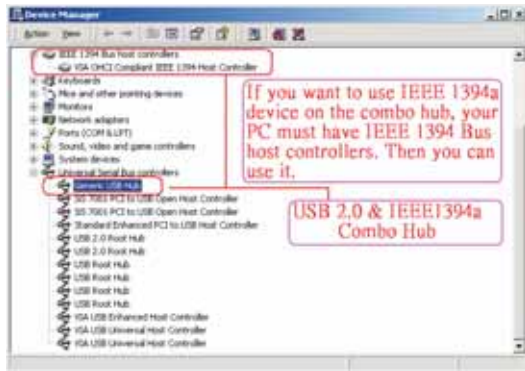
## USB2.0 Hub



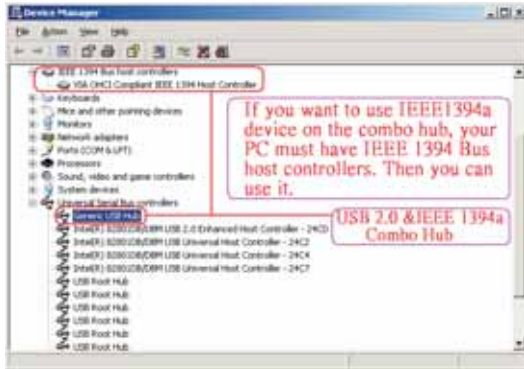
## FireWire Mac OS X 10.4



## Windows 2000 Sp4



## Windows XP Sp2



## Specification:

<b>Interface</b>	One Upstream Port (USB Mini B type) One Upstream Port (IEEE 1394a 6pins) Four Downstream ports (USB A-female type) One Downstream Port (IEEE 1394a 6pins)
<b>USB Standards Compliance</b>	USB 2.0 specs
<b>External AC adapter Index</b>	Input: 100-240V~0.5A MAX, 50-60Hz, Output: +5V / 2.6A
<b>Operating temperature</b>	0 °C to 40 °C
<b>Operating humidity</b>	5% to 90% (non-condensing)

## ***Packing List:***

---

- USB 2.0 & IEEE 1394a Combo Hub
- User's Manual
- USB A to Mini B Cable 1.8M X 1
- External AC Adapter X 1